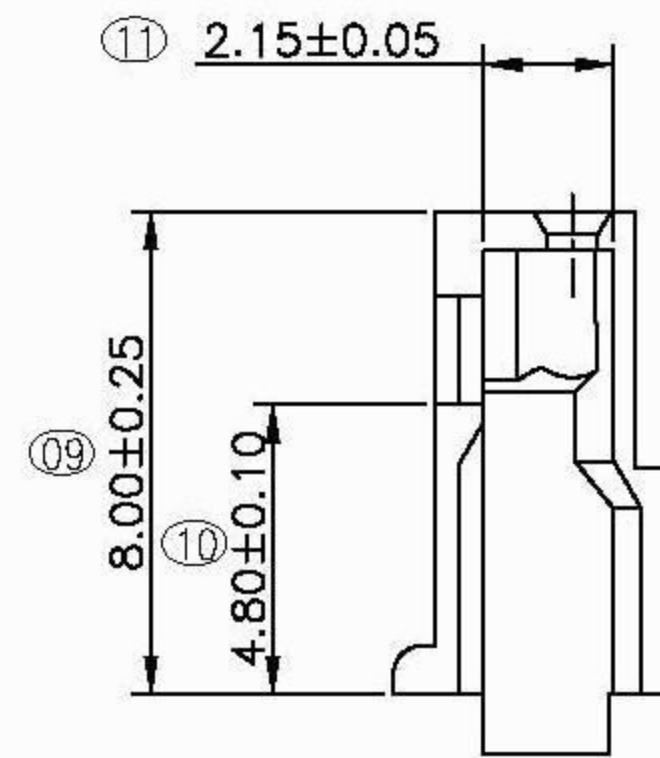
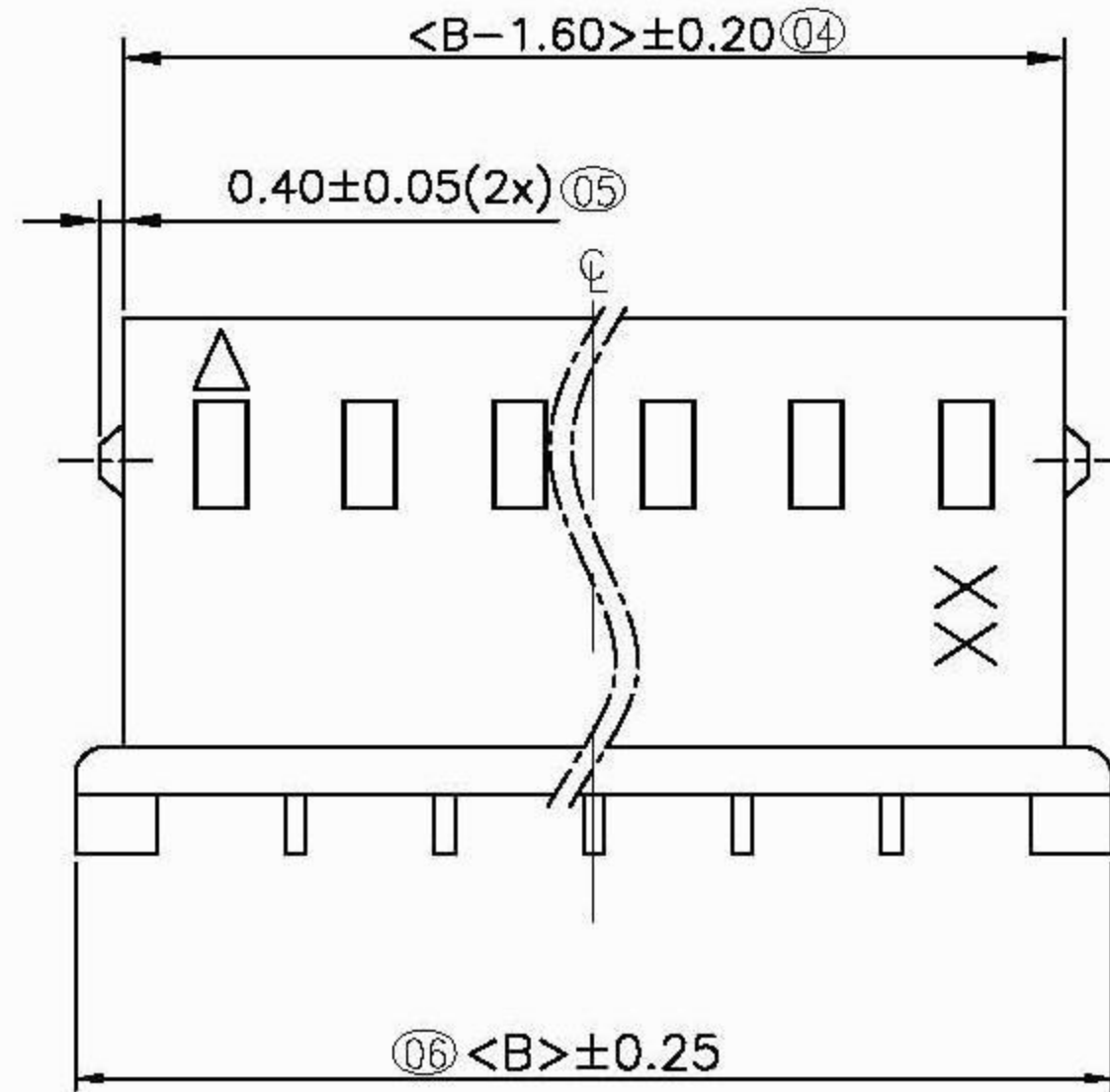
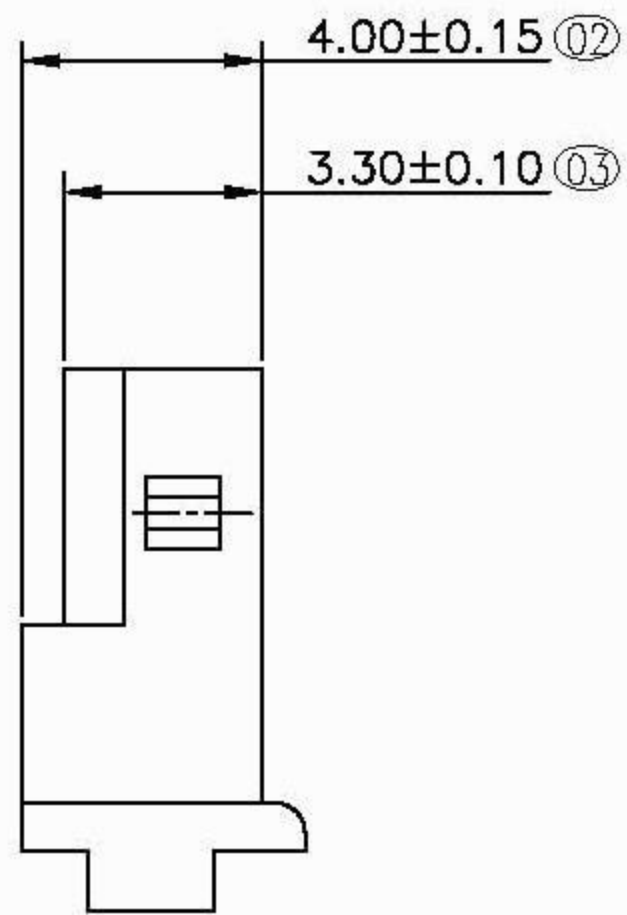
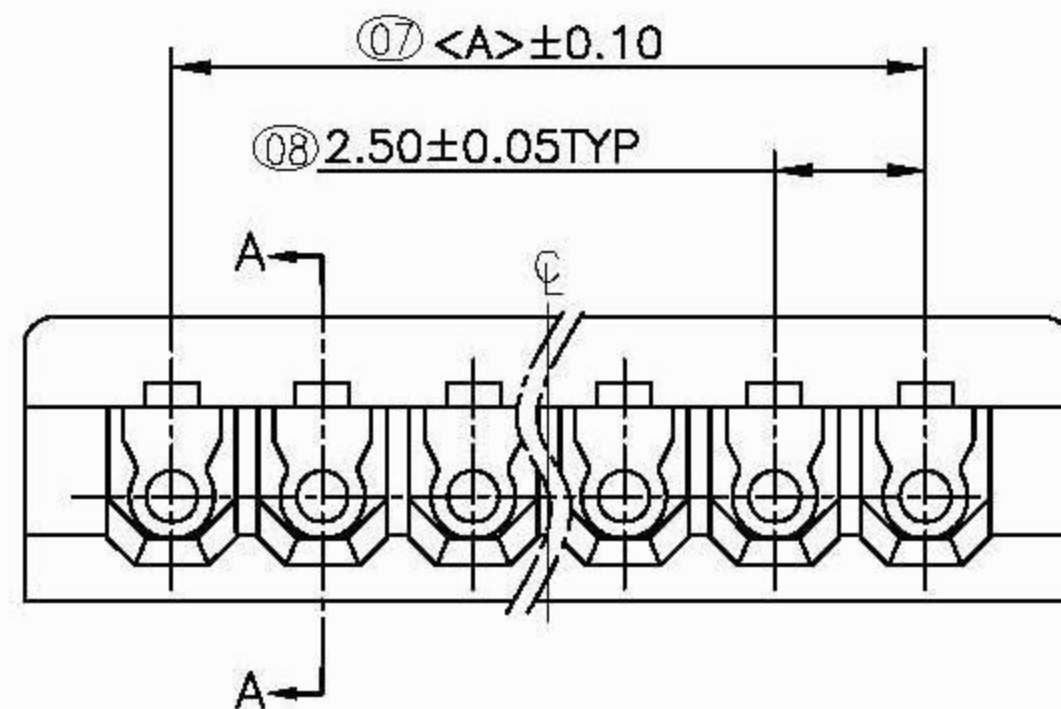


NOTES:

CURRENT RATING: 3A AC/DC  
 VOLTAGE RATING: 250V AC/DC  
 TEMPERATURE RANGE: -25°C~+85°C  
 CONTACT RESISTANCE: 20mΩ MAX  
 INSULATION RESISTANCE: 1000MΩ MIN  
 WITHSTANDING VOLTAGE: 800V AC/MINUTE  
 MATERIAL: PA66 UL94V-0 米黄色



SECTION: (A-A)



PART NO.	Dimensions	
	A	B
WF2502H02	2.50	7.40
WF2502H03	5.00	9.90
WF2502H04	7.50	12.40
WF2502H05	10.00	14.90
WF2502H06	12.50	17.40
WF2502H07	15.00	19.90
WF2502H08	17.50	22.40
WF2502H09	20.00	24.90
WF2502H10	22.50	27.40
WF2502H11	25.00	29.90
WF2502H12	27.50	32.40
WF2502H13	30.00	34.90
WF2502H14	32.50	37.40
WF2502H15	35.00	39.90
WF2502H16	37.50	42.40

GXCON ENTERPRISE CO., LTD

DIM	TOL	DIM	TOL
X.	/	X'	/
X.X	±0.25	X.X'	±2'
X.XX	±0.20	X.XX'	±1'
X.XXX	±0.10	X.XXX'	/

DRAW NO.:		DATE:	P/N NO:	DRAW NAME:	
DESIGN:			WF2502HXX	MX 2.50 HSG	
CHECK:					
REVIEW:			REV. D	SCALE 1:1	UNIT: mm
				SHEET: 1 OF 1	☉